



SOFTWARE CORP

EdgeSentry ES200

A NETWORK APPLIANCE FOR SECURITY, COMPLIANCE, SUPERVISION

EdgeSentry is used in Security, Building Automation and Industrial networks. The ES200 learns the characteristics of the network, monitors the network, sends out notifications and responds to device outages or threats in real time.



front



back

Why EdgeSentry?

- Know your network is working
- Reduce cybersecurity risks

EdgeSentry Detects:

- New-Unauthorized Devices
- Off-Network Connections
- Use of unsafe protocols
- Device offline/unresponsive
- Changes in network topology
- UPS switch to battery power
- UPS alerts
- Violation of network switch port security
- Network switch reboots
- Changes to network switch configuration

EdgeSentry ES200 Features:

- Self Learning
- Active Network Security
- Up to 500 network devices
- Automated email alerts
- No ongoing license costs
- Monitoring of UPS status
- Simplified switch configuration for network hardening
- Secure SNMP v3 switch communications (with auth/priv)
- Monitoring of network switch security parameters

EdgeSentry ES200 Reports:

- Auto generated: Daily, Weekly, Monthly
- Alarm events
- Port usage
- Off Network connections
- Device uptime
- Network topology
- Map of device locations on network



SOFTWARE CORP

Software:



CORE software runs on the ES200 Appliance, collects network data and sends out alerts and reports.



EdgeSentry Configuration Tool is client software that is used to configure the ES200 Core. The Configuration Tool is essential for set up and maintenance of the ES200.



EdgeSentry Dashboard software is client software that is used to monitor recent and current alarms on the ES200 and to search the alarm database.



The ES200 Core contains SwitchLock software controls for configuring and hardening compatible network switches. This software allows the user to view the network topology and search the network for any device by the device's name, IP Address or MAC address. SwitchLock is also available as a stand alone software for security integration companies.

Network Switch Compatibility:

- Antaira Networks
- Cisco (CBS series)
- Comnet (CWGE, CNGE series)
- Juniper Networks (EX series)
- Netgear (M4100 series)
- Transition-Lantronix (SM series)
- Trendnet (TI series)

Please see lmnsoftwarecorp.com for a complete list of compatible switches

Easy To Install:

- Connects to network with Network TAP or SPAN port
- Self learns the network in about 24 hours
- Simple menu-based configuration

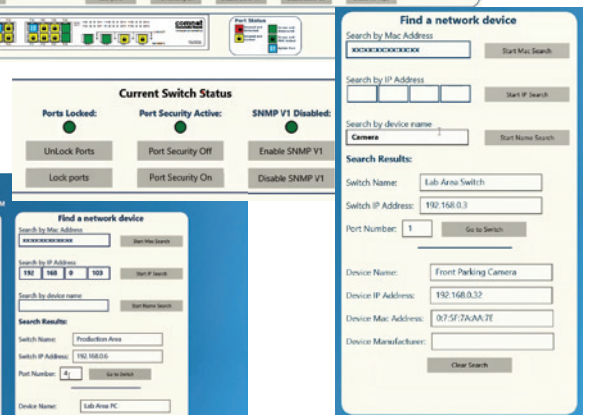
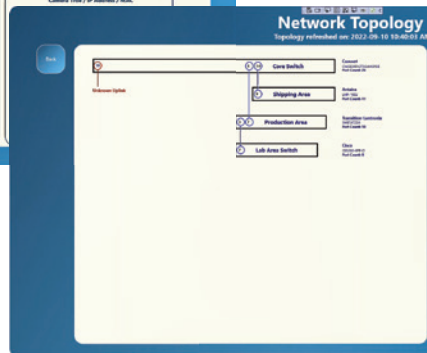
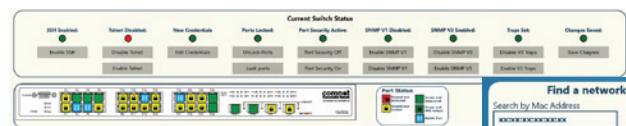
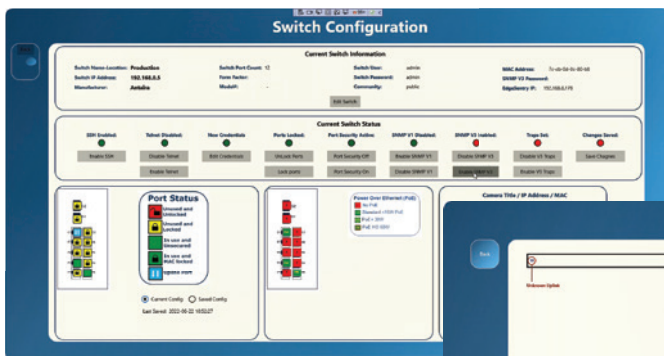
Hardware and OS Specifications:

- Rack mounted chassis, 2RU, 18 inch
- 250 Gb Solid State Drive
- Quad-Core Intel Core i3-10100 3.6Ghz 6MB Cache
- 8GB DDR RAM
- 3 GB Ethernet Ports
- Windows 10 Pro with recovery partition

UPS Monitoring:

- RFC-1628 Standard
- Eaton
- Tripp Lite
- APC

Dashboard Screens



Contact us:

Email: sales@lmnsoftwarecorp.com

Web: lmnsoftwarecorp.com